

audit**maker**[®]

for health professionals



A generic tool for clinical audit

Quickstart Manual

by Dr. Sepehr Shakib

auditmaker: A generic tool for clinical audit: Quickstart Manual

by Dr. Sepehr Shakib

Substantive editing and layout: Paul Hoadley (Logic Squad, paulh@logicsquad.net)

Copy editing and proofreading: Philip Roberts (Logic Squad, phil@logicsquad.net)

Published by **Logic Squad**

P.O. Box 321

RUNDLE MALL 5000

Australia

<techdocs@logicsquad.net>

Published 2003/05/07

Copyright © 2003 Sepehr Shakib

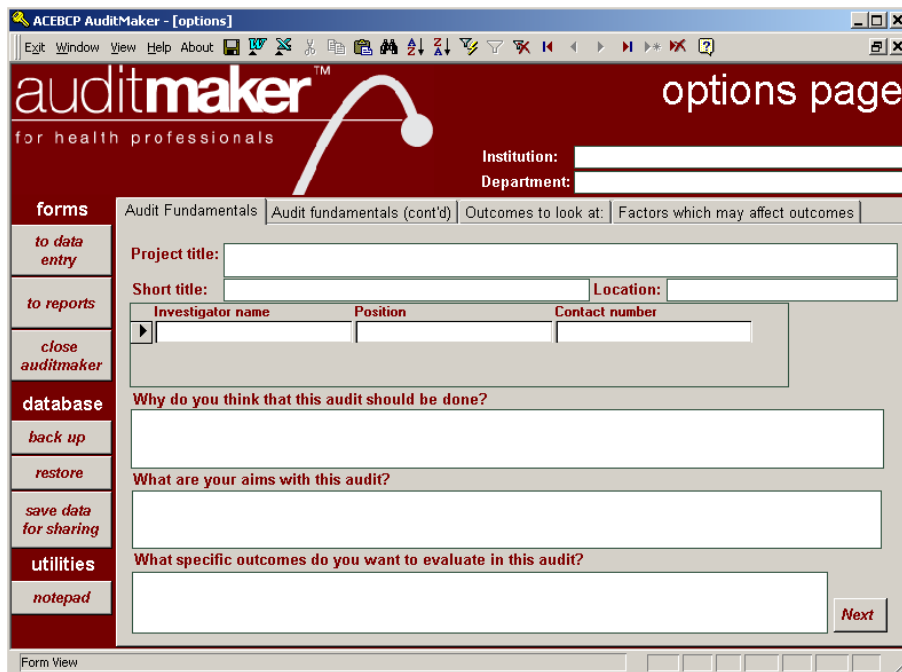
The documentation provided in this manual was correct at the time of publication.

auditmaker Quick Start

This is a quick introduction to **auditmaker** for those who have never seen it demonstrated before. The aim is to give you a very brief tour of **auditmaker**, and get you started, then you can use the rest of the manual to guide you through it and to answer your questions.

1. To install **auditmaker**, you should follow the instructions provided with the distribution medium.
2. Make a copy of **auditmaker**, and rename the copy `trial audit` or something similar.
3. Double click on `trial audit` in order to open it.
4. You are now in the Options Page (see [Figure 1](#)).

Figure 1. Options Page



5. Click on the **Outcomes to look at** tab (see [Figure 2](#)).

Figure 2. Options Page: outcomes to look at

ACEBCP AuditMaker - [options]

auditmaker™ options page

for health professionals

Institution:

Department:

Audit Fundamentals | Audit fundamentals (cont'd) | Outcomes to look at | Factors which may affect outcomes

forms

to data entry

to reports

close auditmaker

database

back up

restore

save data for sharing

utilities

notepad

1. Common outcomes: death, complications, readmissions

2. Text based outcomes *Help me with this option*

Outcome 1

Outcome 2

Outcome 3

Outcome 4

Outcome 5

Outcome 6

Outcome 7

Outcome 8

Outcome 9

Outcome 10

3. Numerical outcomes (including the units of measurement) *Help me with this option*

Outcome 1

Outcome 2

Outcome 3

Outcome 4

Outcome 5

Outcome 6

Outcome 7

Outcome 8

Outcome 9

Outcome 10

Define text outcomes and acceptable values *Define numerical outcomes and minimum and maximum values* *Next*

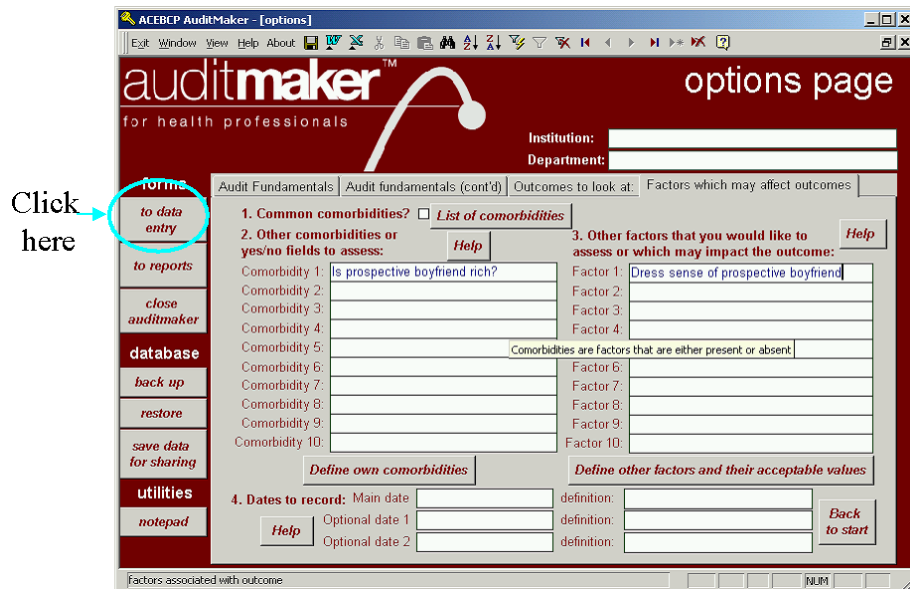
choice of having standard outcomes assessed

6. Type in something (anything) into the first **text based outcome** and **numerical outcome** boxes. Make it anything you like. We will see how it will be used later.
7. Click on the **Factors which may affect outcome** tab (see **Figure 3**).

Figure 3. Options Page: factors affecting outcome

8. Once again type in something for **Comorbidity 1** and **Factor 1**.
9. You have now put in a value each for the numerical and text outcomes, as well as a comorbidity and factor which may influence the outcomes you are interested in. You are now ready to enter in data! To do this, press the **To data entry** button (see **Figure 4**).

Figure 4. To data entry button



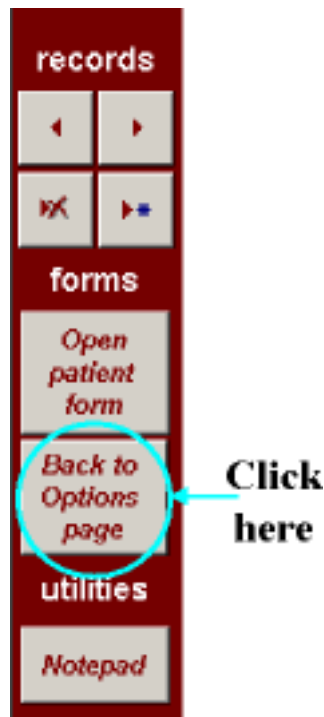
10. This now takes you to the Data Entry Form which has been customised according to the data that you stipulated you want to collect. As you click across the tabs across the top (e.g., user comorbidities, other factors, text outcomes, numerical outcomes), you will notice that what you typed in for each of these options is now the name of fields for the Data Entry Form.
11. Type in some values for the each of these fields, and if you like, leave others blank. You can type in text for the text outcomes, and other factors, a number for numerical outcomes, and you need to click the check box for the user comorbidity.
12. Press the Go to new record button (see [Figure 5](#)).

Figure 5. Go to new record button



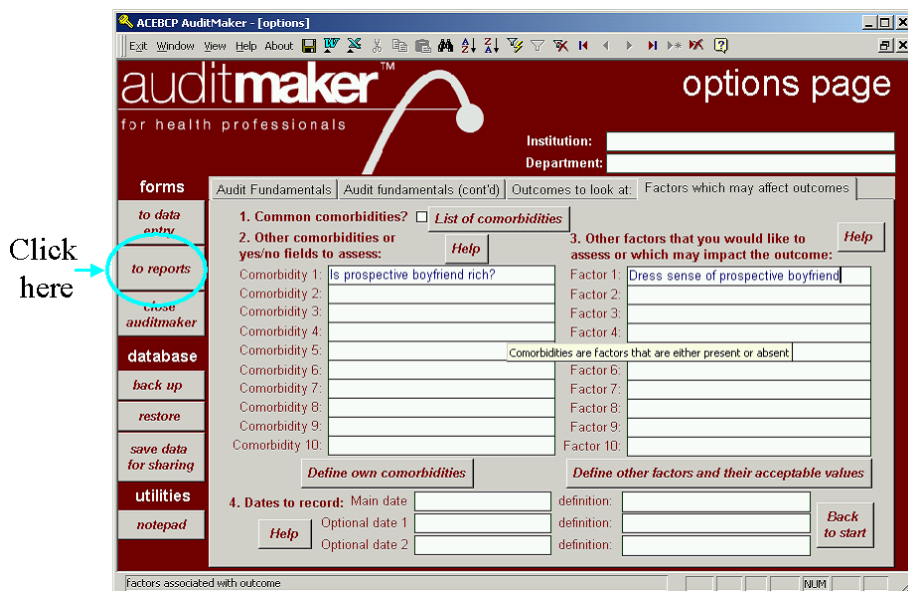
13. Type in some more values for each of the fields, and keep adding a few more records.
14. Press the `Back to options page` button (see [Figure 6](#)).

Figure 6. Back to options page button



15. Press the **To reports** button (see Figure 7).

Figure 7. To reports button



-
16. This brings up the Reports Page. Press the button underneath the text outcomes, which you notice is titled with the name you gave to the text outcome. You will notice that this brings up a report with a summary of the data that you entered into the first text outcome on the Data Entry Form. Press the close button to close this report.
 17. Press the other buttons on the Reports Page such as the `User defined comorbidities`, `Numerical outcomes summaries` or the `User defined factors summary`. These will also generate reports summarising the data that you have entered.
 18. Press the close button to go back to the Options Page.

You have now had a quick tour of **auditmaker**. Only a limited range of the functions within **auditmaker** have been shown, but at least now you get a sense of how to define different fields, enter data, and display simple summary reports.